

LIGHTING CONTROL SOLUTIONS



NICOLAUDIE ARCHITECTURAL

Attractive projects deserve powerful lighting control



Swan Street Bridge, Melbourne, Australia - Illuminated by Coolon LED Lighting
Lighting Design: Relume Consulting - Architect: BKK Architects

Nicolaudie Architectural offers innovative and advanced lighting control solutions for architectural lighting applications. Our solution is based on stand alone hardware controllers, programming software and mobile apps.

As a member of Nicolaudie Group, we benefit from years of research and development in architectural and entertainment lighting control. Hardware and software/mobile app development is shared between our sister companies located around the world.

Our fantastic team can support your projects and offer technical support and training on our control solutions. We are DMX lighting control specialists and you can count on our expertise for your projects!

STICK

Wall-mounted lighting control



STICK range

5 products

stick

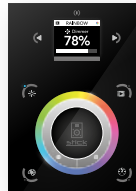
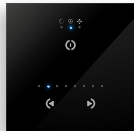
GU2

GA2

CW4

KE2

DE3



General

Dimensions	86 x 86 x 11 mm	86 x 110 x 11 mm	106 x 146 x 10 mm	106 x 146 x 10 mm	106 x 146 x 10 mm
Weight	113g	145g	200g	200g	250g
USB connection	✓	✓	✓	✓	✓
Ethernet connection			✓	✓	✓
WiFi connection			✓		
DMX channels	128	512	1024	1024	1024
Micro SD card				✓	✓

Software

ESA2 software	PC / Mac	PC / Mac	PC / Mac	PC / Mac	PC / Mac
ESA Pro software				PC	PC
ESA Pro 2 software	PC / Mac	PC / Mac	PC / Mac	PC / Mac	PC / Mac
Remote control apps			iOS / Android	iOS / Android	iOS / Android
Arcolis app			iOS / Android	iOS / Android	iOS / Android

Stand alone

Number of scenes	24	99	36	200	500
Number of zones	1	1	1	5	10
Standalone memory	12K	76K			
Memory capacity			2729 steps	SD card limit	SD card limit
Memory (20 ch.)	840	3200			
Memory (60 ch.)	310	1200			
Memory (512 ch.)		140			
Power voltage	5-12V DC	5-12V DC	5-15V DC	5-6V DC	5-6V DC
Power connector	Screw terminal	Screw terminal	Screw terminal or RJ45	Screw terminal or RJ45	Screw terminal or RJ45

Triggering

Live control	Col./Dim.	Col./Dim.	Col./Dim./Sat.	Col./Dim./Speed	Col./Dim./Speed
Touch sensitive buttons	3	4	12 + wheel	10 + wheel	12 + fader
Port triggers	1	8	8	8	8
Clock/calendar triggers			100	40	100
RS232				✓	✓
Internet control			✓		✓
Ethernet integration				✓	✓

Optional

AC/DC adapter	Ref. POWER4M	Ref. POWER4M	Ref. POWER4M	Ref. POWER4M	Ref. POWER4M
RJ45 to block board			Ref. RJ2BLOCK	Ref. RJ2BLOCK	Ref. RJ2BLOCK

STICK-KE2

The return of a precursor

KE2

200
SCENES

5
ZONES

1024
DMX CH.

CLOCK

USB

LAN

APPLE ANDROID
APPS



This trully simple controller features an on/off button at the top, 8 buttons to choose from up to 200 lighting scenes (25x8), 2 buttons to cycle between pages and a horizontal fader to instantly adjust dimmer, speed and color.

STICK-DE3

The star of the STICK family

DE3

500
SCENES

10
ZONES

1024
DMX CH.

CLOCK

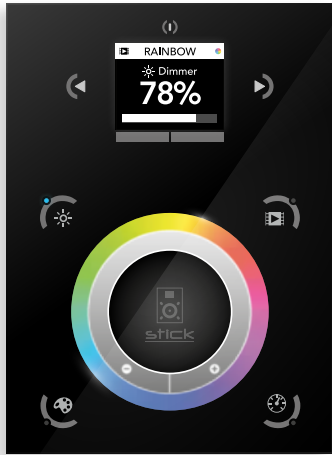
USB

LAN

APPLE ANDROID
APPS

RDM

The feature rich STICK-DE3 has been designed to provide a control solution for the most demanding of projects and yet easy enough for anyone to use. The controller integrates a graphical color display, allowing scene photos to be displayed. Easily view the selected zone, scene name and design without the need to navigate through complex menus.



STICK-CW4

The genius of the STICK family

CW4

36
SCENES

1
ZONE

1024
DMX CH.

CLOCK

USB

WIFI

APPLE ANDROID
APPS

RDM



The STICK-CW4 programmable lighting controller, for RGB and RGBW lighting, has been designed around a touch sensitive color wheel. The controller is USB programmable from a PC or Mac using the ESA2 software.

Up to 36 scenes can be stored within the controller and directly recalled via six touch sensitive scene buttons. A button located in the center of the color wheel can be used to jump between scenes or reset a color change.

STICK-GU2 , STICK-GA2

As simple as a dimmer switch

GU2

GA2

24
SCENES

1
ZONE

128
DMX CH.

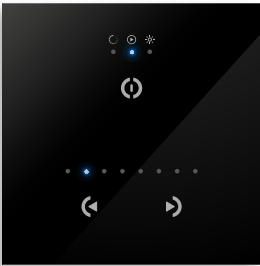
USB

99
SCENES

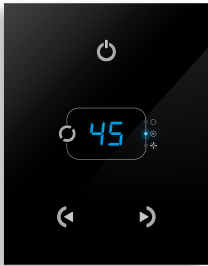
1
ZONE

512
DMX CH.

USB



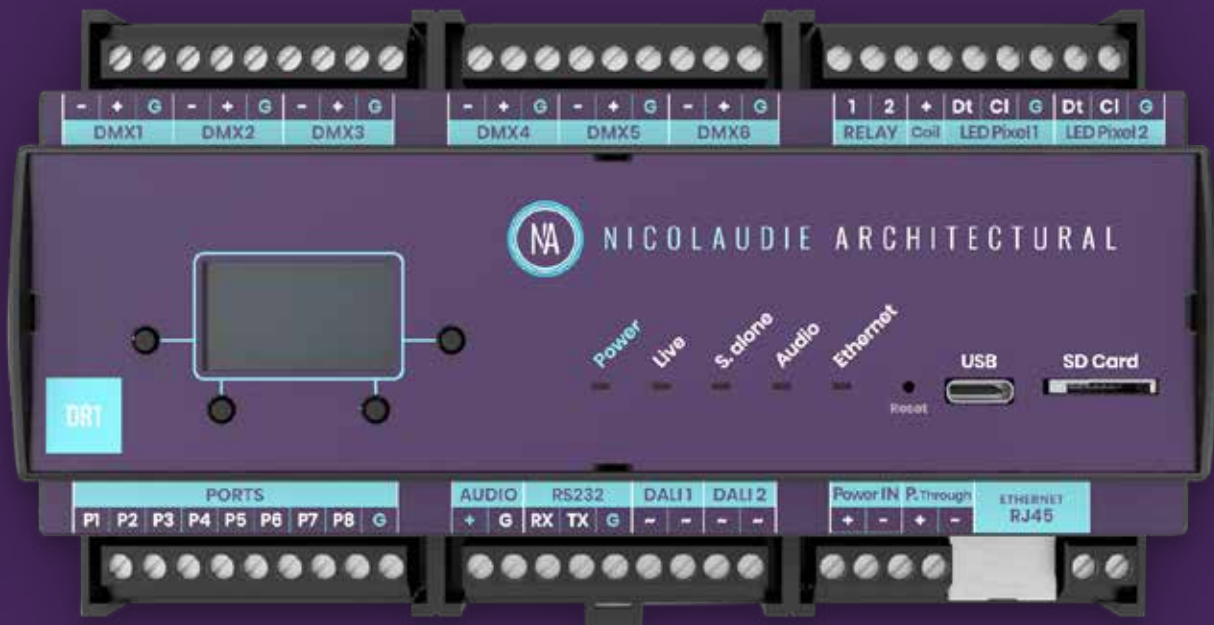
The dimmer switch of the 21st century is here. Available in black and white, the STICK 2 provides a simple yet powerful solution for your RGB lighting control needs.



The STICK-GA2 offers the best solution for projects requiring a large amount of scenes along with an uncluttered and intuitive interface.

DINA

New DINA range for DIN rail mounting



DINA range

5 products



General

Dimensions	160 x 91 x 62 mm	160 x 91 x 62 mm	106 x 91 x 59 mm	160 x 91 x 62 mm	52 x 29 x 24 mm
Weight	317g	317g	180g	180g	16g
USB connection	✓	✓	✓	✓	✓
Ethernet connection	✓	✓	✓	✓	
OUTPUT channels	3072 (Multiple)*	1024 (DMX) *	1024 (DMX)**	512 (DMX) **	60 (DMX)***
RDM	✓	✓	✓	✓	
LED Pixel	Coming soon	optional			
eDMX	✓	✓			
DALI	✓	optional			
Memory capacity	16 MB	16 MB			8KB
Micro SD card	✓	✓	✓	✓	
Nicolaudie Cloud	✓	optional	✓	optional	

Stand alone

Number of scenes	2000	2000	99	99	99
Number of zones	20	20	5	5	1
Power voltage	8-15V DC	8-15V DC	8-15V DC	8-15V DC	5-5.5V DC
Power connector	Screw terminal	Screw terminal	Screw terminal	Screw terminal	mini USB

Triggering

Ports	8	8	8+3	8+3	1
Clock/calendar triggers	✓	✓	✓	✓	
RS232	✓	optional			
Ethernet integration	✓	✓	✓	✓	
Audio	✓	optional			
DALI	✓	optional			

Software

ESA2	PC/Mac	PC/Mac	PC/Mac	PC/Mac	PC/Mac
ESA Pro 2	PC/Mac	PC/Mac	PC/Mac	PC/Mac	PC/Mac
Arcolis Remote	IOS/Android	IOS/Android	IOS/Android	IOS/Android	
Arcolis Remote Pro	IOS/Android	IOS/Android	IOS/Android	IOS/Android	
Arcolis Designer	IOS/Android	IOS/Android	IOS/Android	IOS/Android	

* Upgradable to 6144 eDMX channels as an option

** Upgradable to 1536 channels as an option

*** Upgradable to 512 channels as an option

DINA-DR1

Robust, powerful and scalable solution

DR1

2000
SCENES

20
ZONES

3072
DMX CH.

CLOCK

USB

LAN

APPS

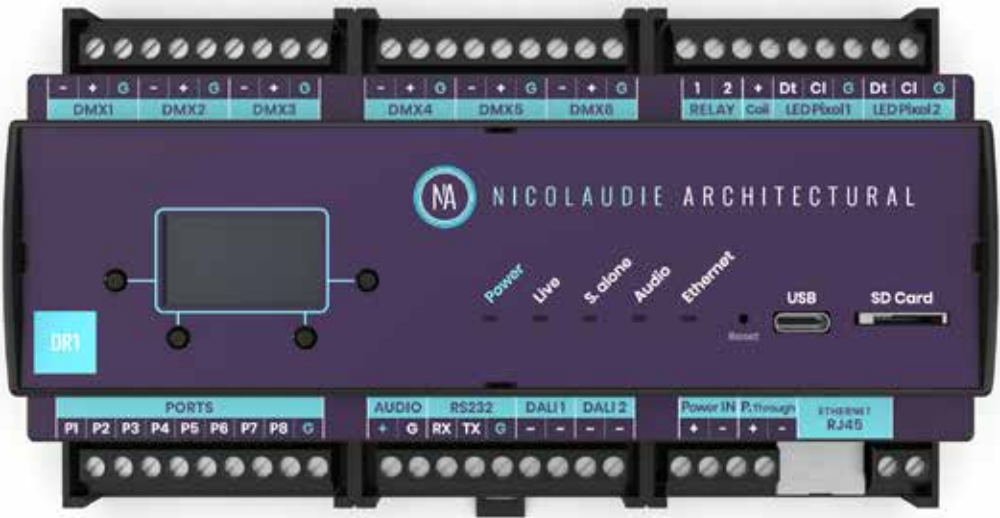
AUDIO

DALI

LED
PIXEL

RDM

CLOUD



The DINA-DR1 is the latest lighting control solution from Nicolaudie Architectural. Our talented R&D team has worked a lot to design this all-in-one controller featuring multiple output protocols (DMX, Art-Net or SACN, LED Pixel, DALI), triggering and integration facilities, programmable memory for dynamic lighting sequences, remote control...

DINA-DR1 LITE

Entirely based on the DINA-DR1, the LITE version comes with limited but expandable features. Because there is no perfect controller for all projects, the DR1 LITE is the «on demand» answer to the most demanding projects. Refer to the comparison table to find out what is standard and what is optional.

NASPLIT-4 DMX RDM splitter

DMX splitters are recommended for lighting control installations. They make the wiring a lot easier by allowing several cables to run from the same output of the DMX controller. They also offer a protection of the DMX line by making each output/input connections fully isolated from each other as well as boosted outputs.

Our 4 outputs NASPLIT-4 DMX is RDM compatible and therefore supports RDM configuration of your lighting fixtures.



DINA-DR2

DIN rail mounted lighting controller

DR2

99
SCENES

5
ZONES

1024
DMX CH.

CLOCK

USB

LAN

APPS

RDM

CLOUD



Designed for DIN rail mounting, the DINA-DR2 is the perfect solution for mid-range lighting installations. Delivered with 1024 DMX channels, the controller can be upgraded to 1536 by adding a 3rd DMX universe.

Programmable with ESA Pro 2 software or with Arcolis application, it features some great possibilities (multi-zone, extended triggers, 16-bit channels management...).

DINA-DR2 LITE

Featuring 512 DMX channels and based on the DINA-DR2, the DINA-DR2 LITE is a very affordable solution to benefit from the new standalone engine capabilities. Refer to the DINA-DR2 for more information about the product and to the comparison table to find out what is standard and what is optional.

DINA-DR MICRO

Nothing more, nothing less

DRμ

1
ZONE

60
CHANNELS

USB



Because small and simple projects deserve creative lighting control, we have created the DR MICRO. This set and forget product is our most affordable DMX control solution.

SLESA

Stand Alone DMX Lighting controller



SLESA range

3 products



General

USB connection	✓	✓	✓
Ethernet connection			✓
WIFI connection		✓	
ESA software	PC	PC	PC
ESA2 software	PC / Mac	PC / Mac	PC / Mac
ESA Pro 2 software	PC / Mac	PC / Mac	PC / Mac
DMX channels	256	512*	1024 **
RDM	✓	✓	✓

Standalone mode

Number of scenes	20	99	99
Number of zones	1	1	5
Standalone memory	20K	100k	micro SD
Memory capacity (20 ch.)	1200	3935	unlimited
Memory capacity (60 ch.)	440	1550	unlimited
Memory capacity (512 ch.)		190	unlimited
Power voltage	5-5,5V DC	5-5,5V DC	5-5,5V DC
Power connector	mini USB	USB Type-C	USB Type-C

Triggering

Mechanical buttons	3	3	13
Internal connector	18 pins	HE10	
Port triggers	8	8	16
Clock / calendar triggers			Unlimited
Remote control apps		✓	✓

* upgradable to 1024 channels as an option
** upgradable to 2048 channels as an option

SLESA-U11

Intuitive lighting control solution

U11



The new SLESA-U11 is built on the latest generation of lighting controllers from Nicolaudio Architectural and combines all our recent innovations.

Programmable with ESA Pro 2 software or with Arcolis, the SLESA-U11 features the new Nicolaudio Stand Alone engine (NSA) offering some great possibilities (multi-zone, extended triggers, 16-bit channels management...) and an intuitive backlit keyboard with 10 presets.

Thanks to its Ethernet connection, the SLESA-U11 can be controlled from our Easy Remote Pro or LightPad applications.

SLESA-U10

WIFI standalone controller

U10



Featuring RDM DMX as well as a built-in WIFI connection, the SLESA-U10 is the perfect solution for connected applications.



SLESA-U9

Simplicity and reliability for your projects

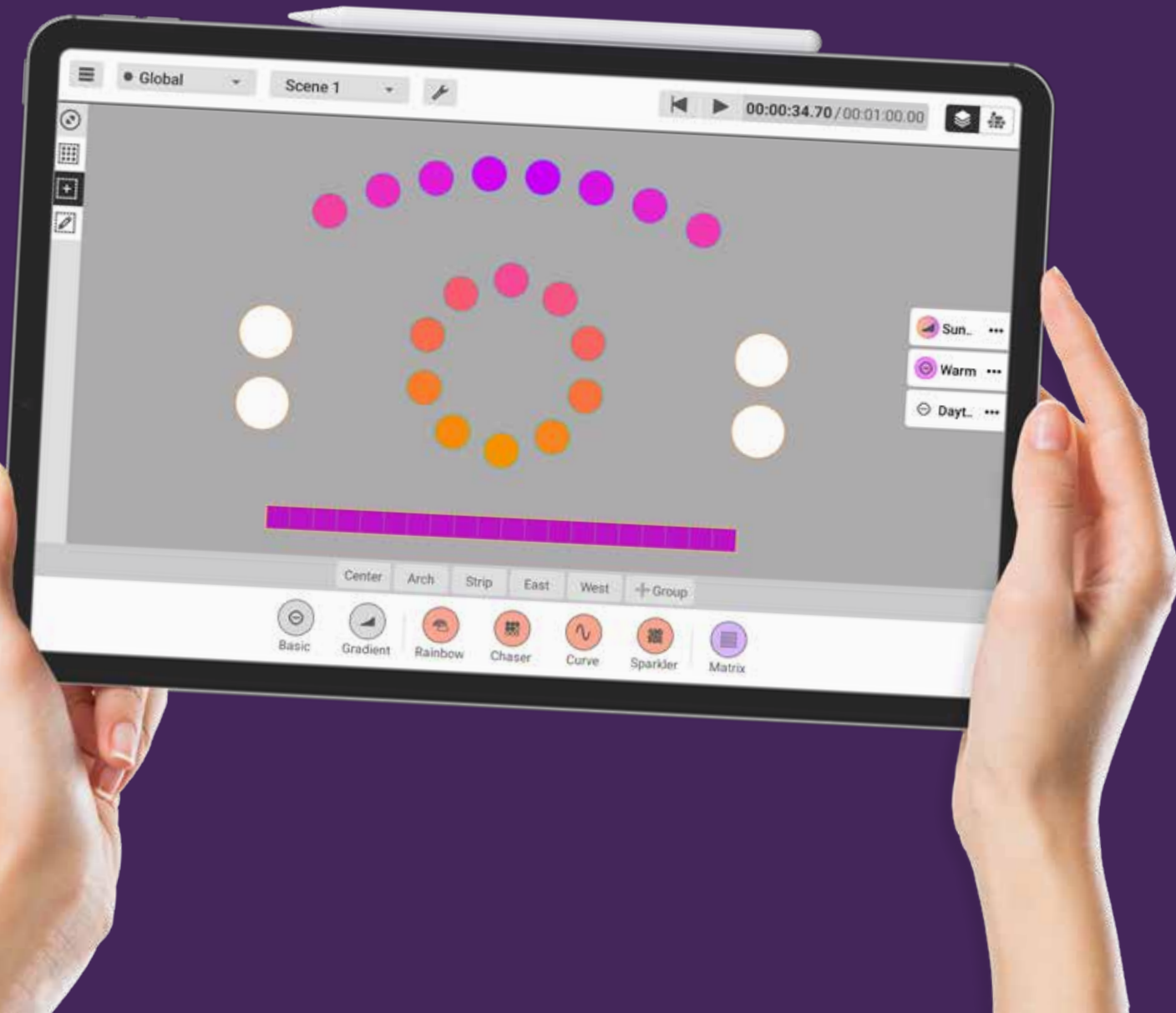
U9



The most cost-effective version of our standalone DMX interfaces for applications where simplicity and reliability are very important.

Arcolis

Arcolis suite, tools to compliment SLESA, STICK & DINA range

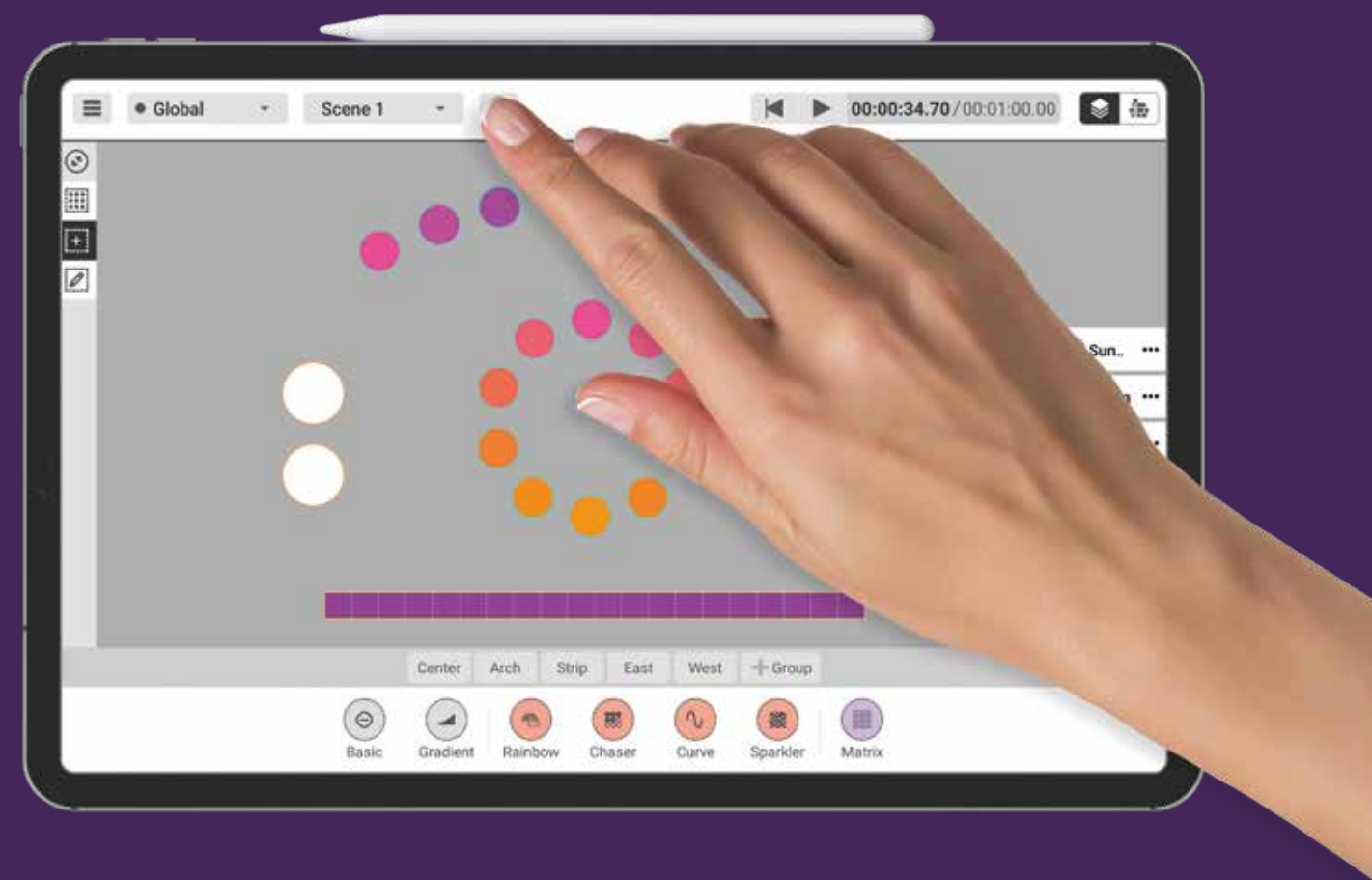


Arcolis Designer

On-site programming



Typical lighting apps are often limited to a simple remote control, with the programming made using computer software, often requiring hours of training to master. Available for Android, Amazon Fire, iPhone and iPad, Arcolis combines an easy to use app with a powerful timeline-based lighting programming system. Gone are the days of standing on-site with a laptop balanced on one hand and a user manual in the other!



Mobility Arcolis Designer gives you the freedom to move around the site, controlling and programming an installation in real-time without being restricted to a laptop and USB cable in the control room.

Fixture Mapping Map out a 2D plan of your lights. Arcolis Designer supports single lights in addition to LED strips and matrix arrangements. Choose between single channel dimming, or color mixing lights.

Projects Create projects for your lighting installations and synchronise them over the internet with Light Cloud.

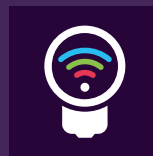
Color Temperature Mixing Mix RGB, Warm White and Cold White light sources. Arcolis allows you to choose which colors your lights use and mix these colors in your effects.

Design Scenes Assign colors, dimming levels and color mixing effects. Arrange effects on a timeline and schedule scenes to play at a certain time and on specific days throughout the year.

Play & Write Control your lights in real-time over WiFi, then remotely write the final project to a Nicolaudio DMX interface to control without the app.

Arcolis Remote Pro

User interface designer



Create an entirely customized remote controller for your tablet or smartphone. Arcolis Remote Pro is a powerful and intuitive app allowing you to easily add buttons, faders, color wheels and more.



Arcolis Remote

Intuitive & easy solution



Arcolis Remote makes life easier by creating an exact replica of the STICK/SLESA/DINA on your smartphone or tablet. You can even swipe down the screen to reveal quick access scene selection buttons.

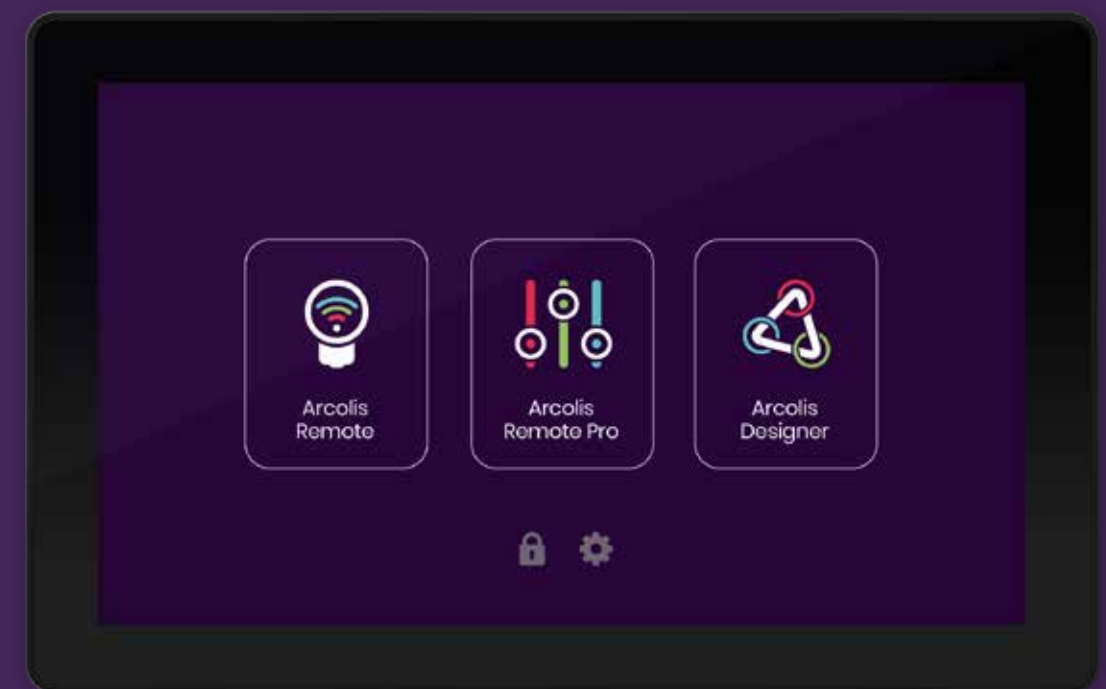


Arcolis Remote and Arcolis Remote Pro are freely available for iPhone, iPad and Android. They can be used to control the SLESA-U10, SLESA-U11, STICK-CW4, STICK-KE2, STICK-DE3, DINA-DR1 and DINA-DR2 over a WiFi network.

NATOUCH-1

Wall-mounted touch screen for remote control

NT1



The Nicolaudie NATOUCH-1 is a stylish and versatile wall-mounted touch screen that works as a remote control with any STICK or DINA controller with a network connection. The NATOUCH-1 features a 7 in. (178 mm) capacitive touch screen display, Wi-Fi and RJ45 network connectivities and preloaded remote applications. An Ethernet LAN connection (RJ45) is all that is required to connect the NATOUCH-1 to your lighting controller. For installations without access to Ethernet, the touch screen can also be connected over Wi-Fi via a local wireless network.

Software & Mobile Apps

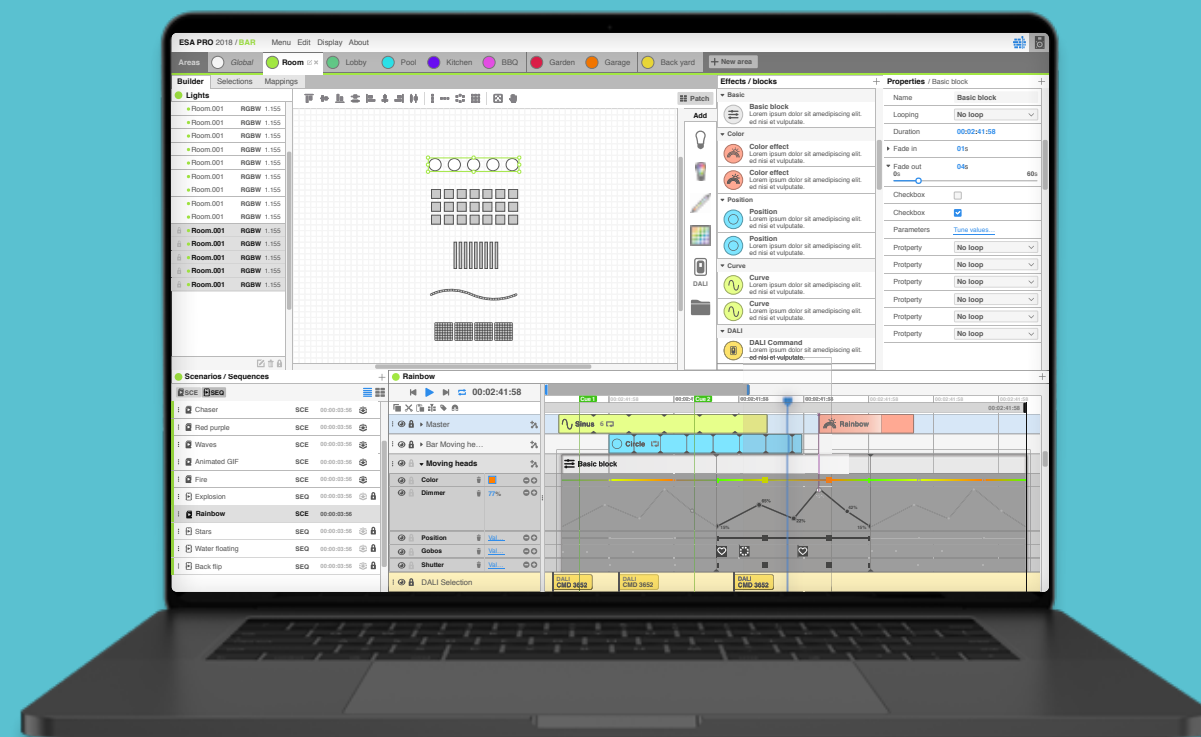
A complete suite of software and mobile apps for control and programming

Easy Stand Alone 2

Simple & efficient

ESA2

Compatible with both Windows and Mac, Easy Stand Alone 2 software has evolved over the years to become a worldwide reference for architectural lighting control. It only requires a few minutes to setup the software and gain full control of any kind of lighting.

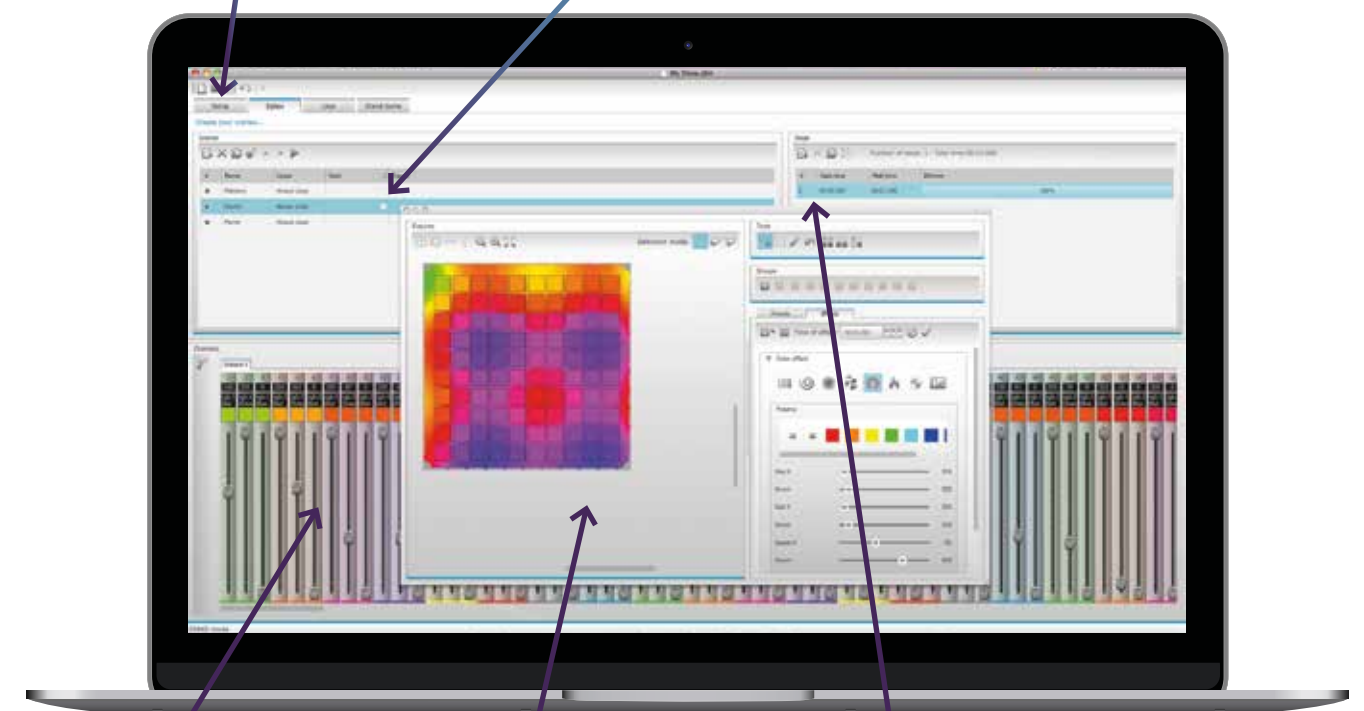


Tabs

SETUP: insert your lighting fixtures
EDITOR: easily create your scenes
USER: control your lights in live mode
STAND ALONE: write to the interface memory

Scenes

Creating scenes can be carried out very easily. For each scene, the software allows you to determine any number of steps, the number of loops, as well as the following scene.



Faders

The vertical faders at the bottom of your screen correspond to the DMX level (0 to 255) for each channel. There are several ways to modify these levels.

Scenes builder

Arrange your lighting fixtures and easily create stunning RGB/RGBW color mixing and moving effects with the new scene builder.

Steps

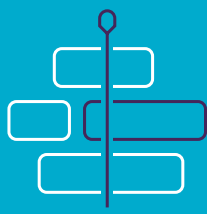
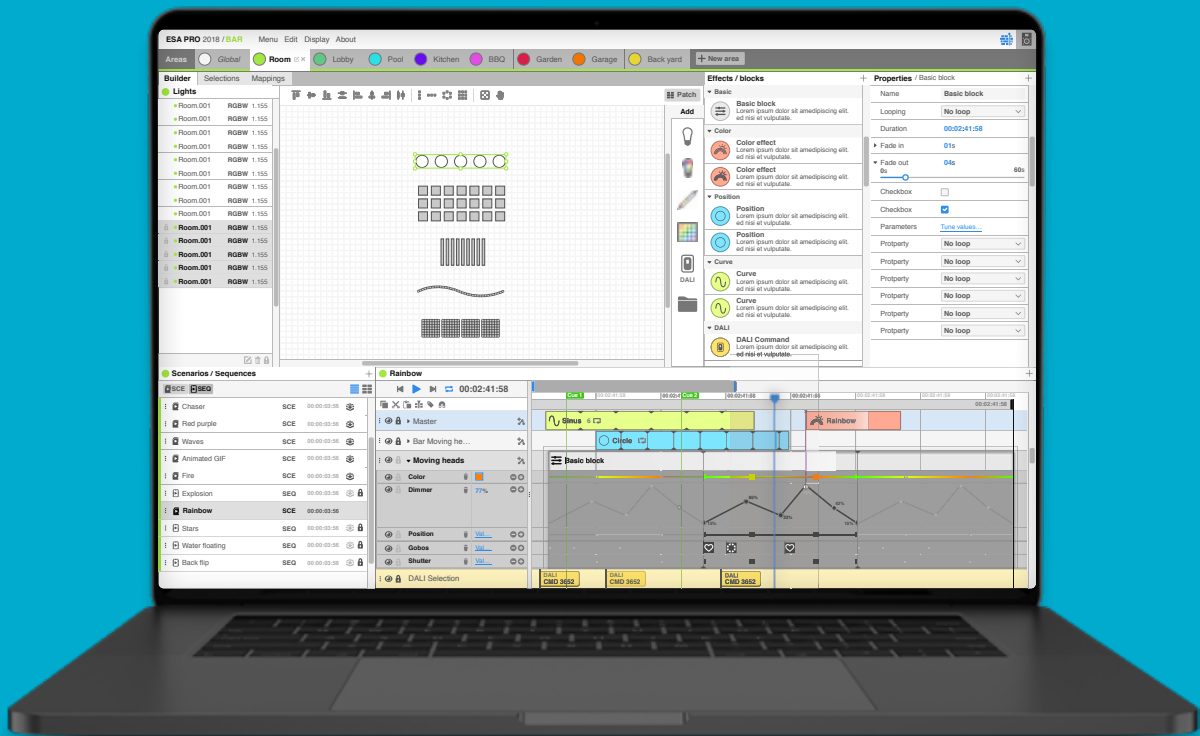
Each Step has a fade time and a waiting time which can be set. By creating several steps in sequence, you will then build a dynamic scene.

Easy Stand Alone Pro 2

Be creative, be pro

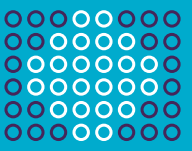


ESA Pro 2 is the latest generation of our programming software. It combines many innovations along with an ergonomic design. Entirely designed from scratch, ESA Pro 2 is available for both Mac and Windows and offers amazing new features like timeline automation, pixel mapping, multi-zone programming...



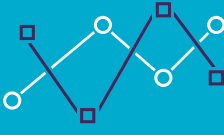
Timelines editor

Every scene is built with the timelines. Thanks to this tool, it becomes very easy to build your show. Various effects, static or dynamic are available and can be dragged to the timelines.



Pixel mapping

Position your LED fixtures according to your installation and map them to pixels using different shapes in order to play multiple effects across them.



Automations

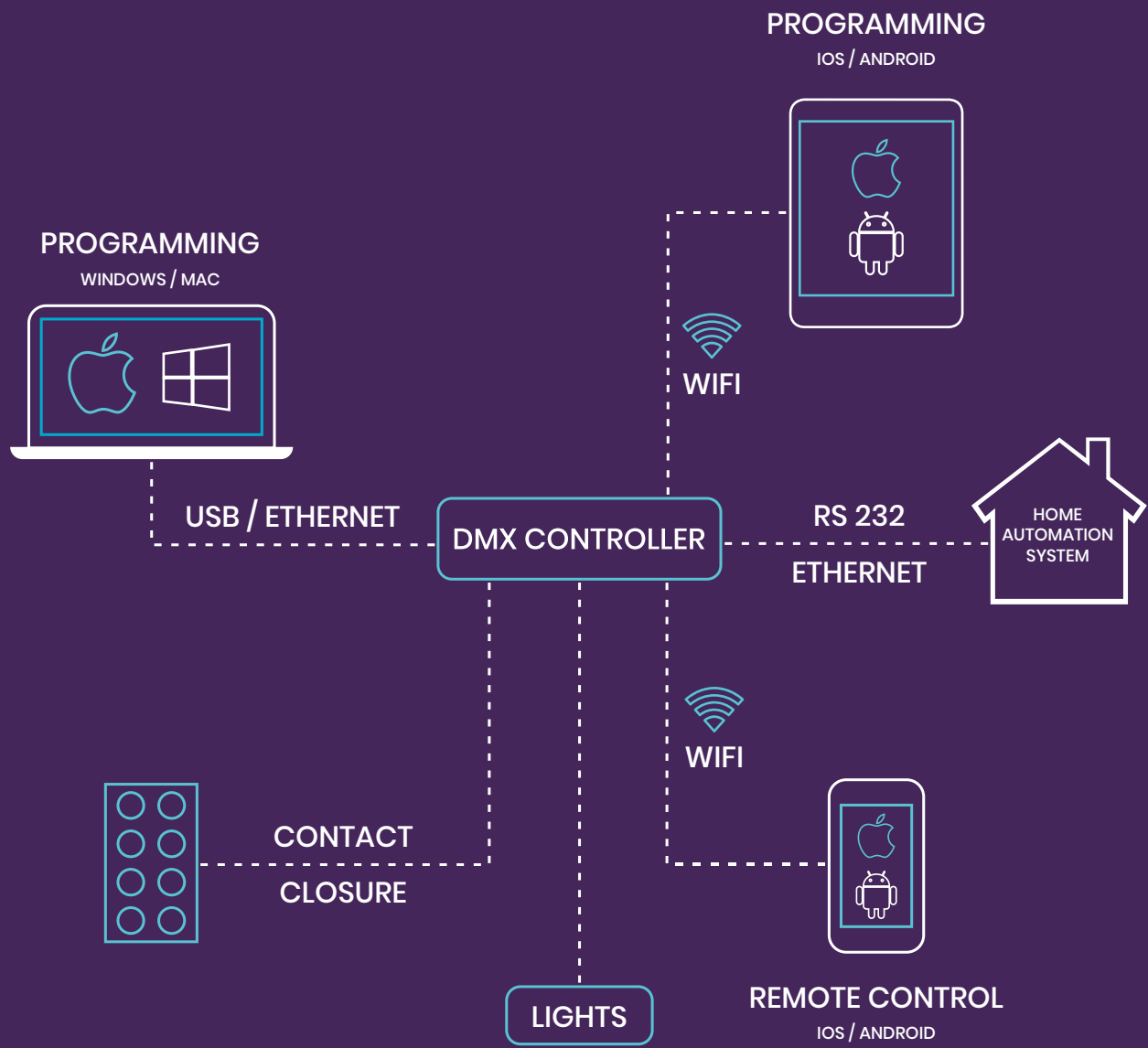
Color, dimmer, saturation... all effects properties can now be modified with linear curves on top of the timelines. For example, the dimmer of an effect could fade from 0% to 100% following the time.



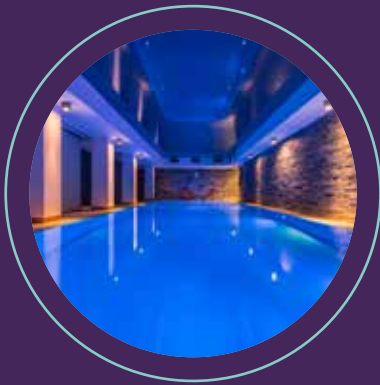
Full colors management

In addition to RGB colors, ESA Pro 2 allows you to play amazing effects on any color or color mixing system: RGBW, RGBA, white only, tunable white...

Programming, triggering, integration and more...



Most of the applications will use USB and DMX512 connections only, but the most demanding of our customers will also be able to interface additional devices through various connections: contact closures, UDP/TCP, RS232...



www.nicolaudie.com

N+G
Nicolaudie Group

Copyright © 2024 - Nicolaudie Group. All rights reserved.

All brands and product names are registered trademark and the property of their respective owners. Specifications are subject to change without notice. Images and illustrations may not always match contents.