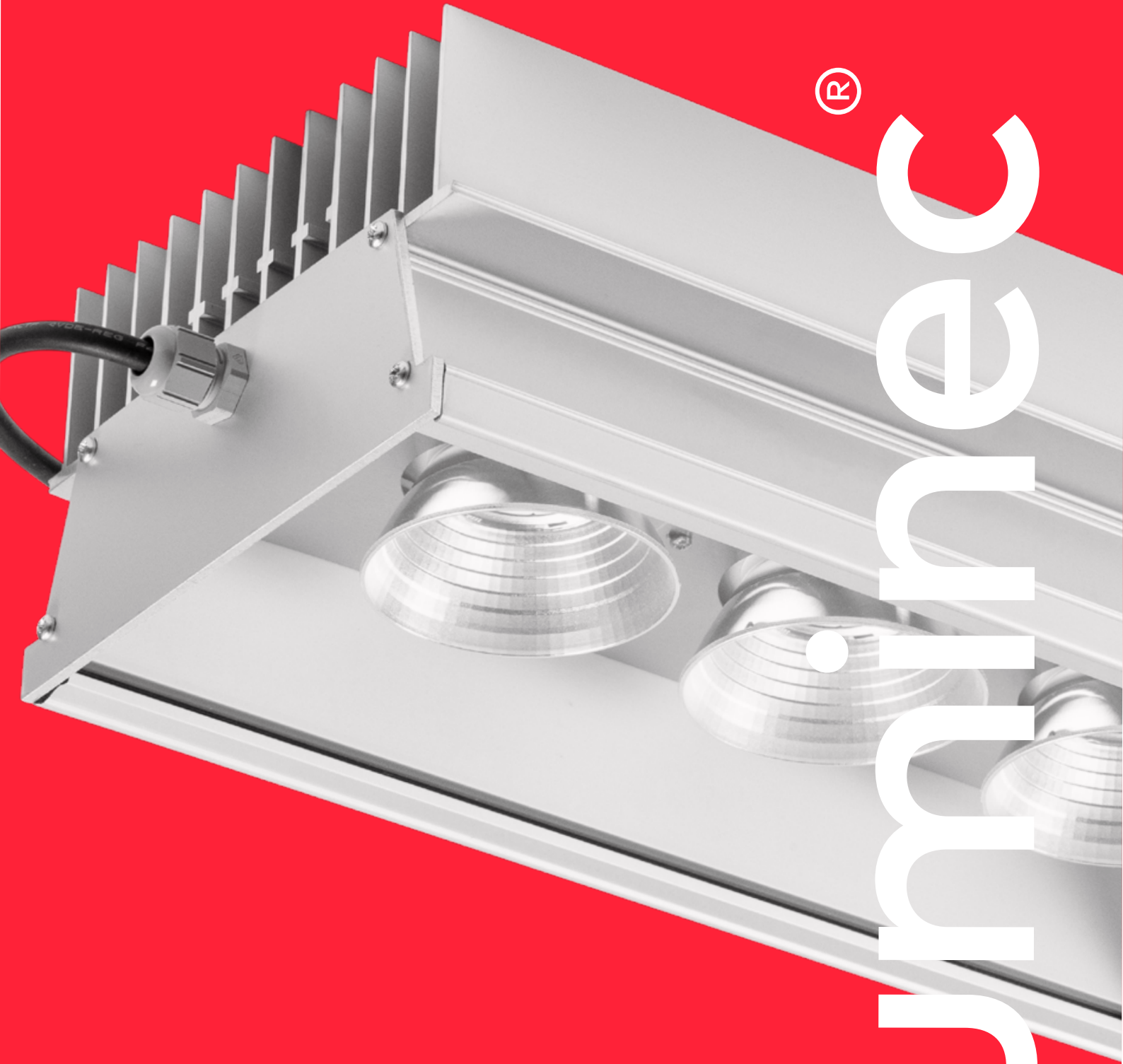


**HAMK**

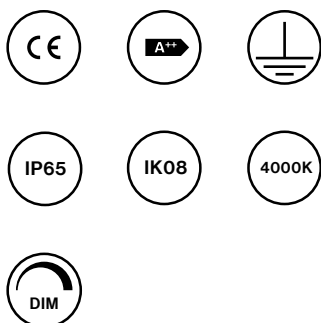
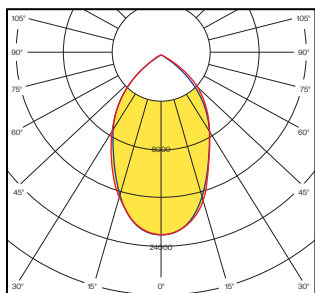
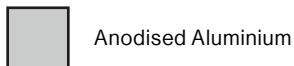
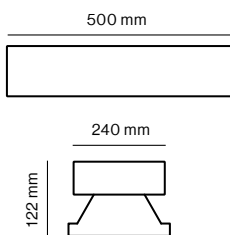
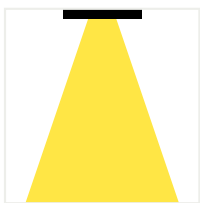
luminec.com

**HAMK 150-X5**

Luminec industrial light series HAMK is durable dust and splash proof LED luminaire suitable to illuminate production and warehouse buildings.



luminec



## HAMK 150-X5

**Product code :** HAMKX5-150-84-60-DA-G4

### Description

HAMK is a strong and versatile LED luminaire, designed especially for large industrial buildings and intended for long-term and efficient lighting. The luminaire's strong and durable housing is made of low-iron and low-copper content anodized aluminum. The luminaire has weather resistance IP65, impact resistance IK08 and operates at temperatures from -40°C to +45°C

### Installation

As part of HAMK's design, there is a built-in mounting rail that allows the luminaire to be attached directly to the cable tray. In addition, the luminaire can be mounted on a wall with adjustable mounting or ceiling with a cable.

### Technical data

|                               |                              |
|-------------------------------|------------------------------|
| IP class : 65                 | Max. working temp. (°C) : 45 |
| IK class : 08                 | Optics : Reflektor           |
| Min. working temp. (°C) : -40 | Beam angle (°) : 60          |

### Electrical parameters

|                         |                                          |
|-------------------------|------------------------------------------|
| Voltage (V/AC) : 90-305 | Max nr. of PSU 16A C circuit breaker : 7 |
| Frequency (Hz) : 47-63  | DIM : DALI                               |
| Power (W) : 150         |                                          |

### Light source

|                                           |                                            |
|-------------------------------------------|--------------------------------------------|
| Color temperature (K) : 4000              | MacAdam (SDCM): 3                          |
| Luminous flux from luminaire (lm) : 24000 | Lifespan (IEC 62717) 25° : L90 B50 55000h. |
| Light efficiency (lm/W) : 160             |                                            |
| Color rendering index (Ra) : 80           |                                            |

### Body

|                            |                                 |
|----------------------------|---------------------------------|
| Body material : Al-6063-T5 | Glass materjal : F4 clear glass |
| Optics material : PC       |                                 |

### Weight and dimensions

Weight (kg) : 7.5  
 External measure (mm) : L500 x W240 x H122