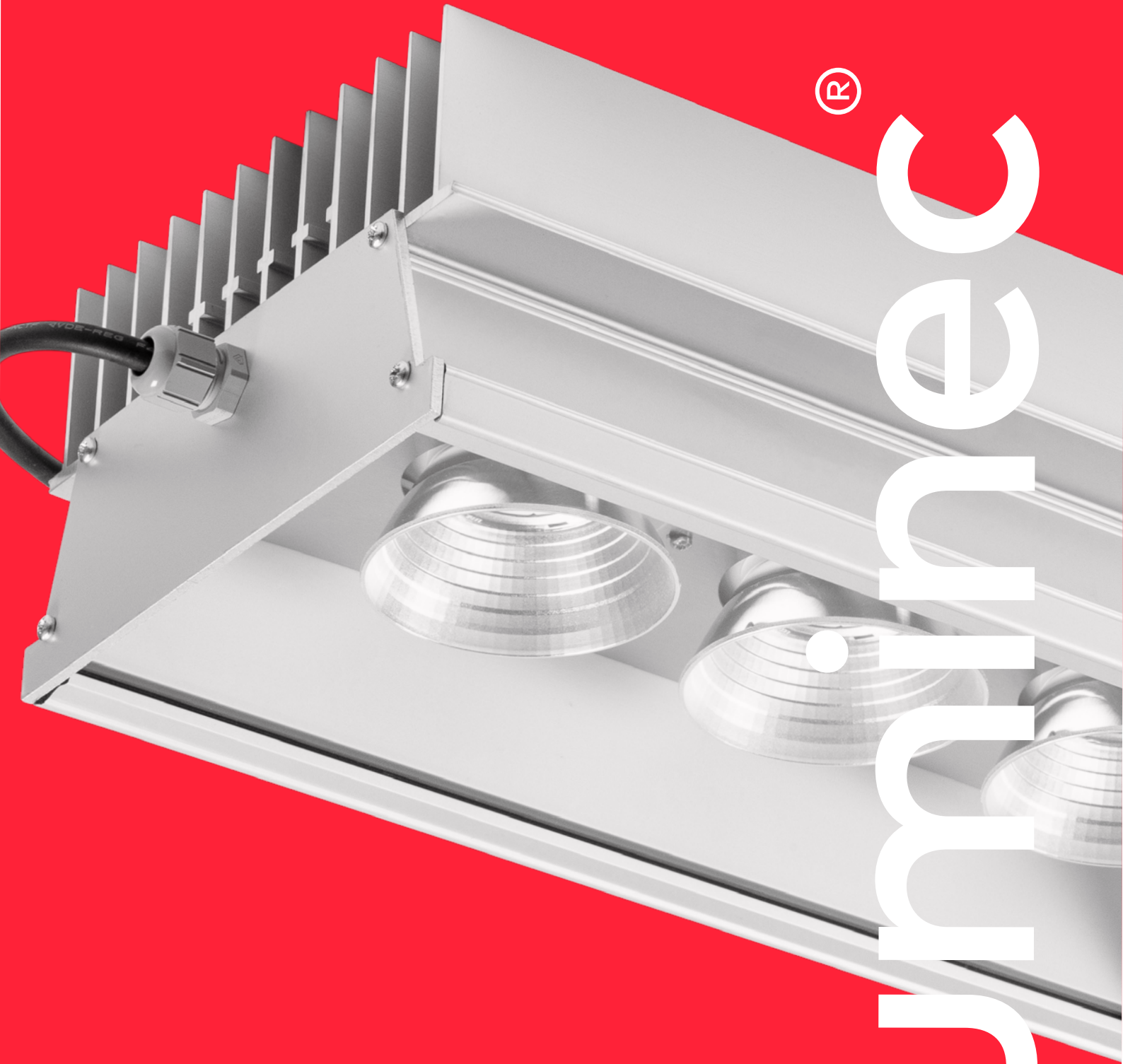


**HAMK**

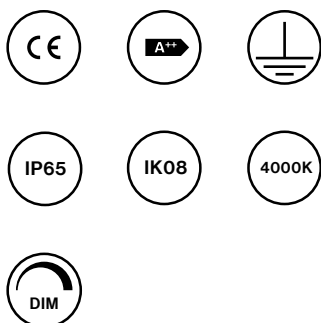
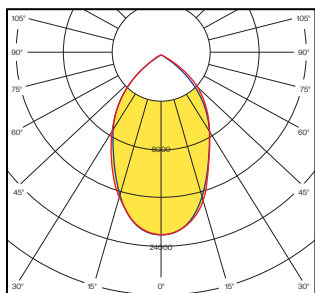
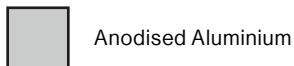
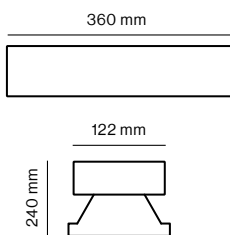
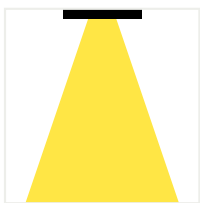
luminec.com

**HAMK 120-X4**

Luminec industrial light series HAMK is durable dust and splash proof LED luminaire suitable to illuminate production and warehouse buildings.



luminec



## HAMK 120-X4

**Product code :** HAMKX4-120-84-60-DA-G3

### Description

HAMK is a strong and versatile LED luminaire, designed especially for large industrial buildings and intended for long-term and efficient lighting. The luminaire's strong and durable housing is made of low-iron and low-copper content anodized aluminum. The luminaire has weather resistance IP65, impact resistance IK08 and operates at temperatures from -40°C to +45°C

### Installation

As part of HAMK's design, there is a built-in mounting rail that allows the luminaire to be attached directly to the cable tray. In addition, the luminaire can be mounted on a wall with adjustable mounting or ceiling with a cable.

### Technical data

IP class : 65	Max. working temp. (°C) : 45
IK class : 08	Optics : Reflektor
Min. working temp. (°C) : -40	Beam angle (°) : 60

### Electrical parameters

Voltage (V/AC) : 90-305	Max nr. of PSU 16A C circuit breaker : 7
Frequency (Hz) : 47-63	DIM : DALI
Power (W) : 120	

### Light source

Color temperature (K) : 4000	MacAdam (SDCM): 3
Luminous flux from luminaire (lm) : 19200	Lifespan (IEC 62717) 25° : L90 B50 55000h.
Light efficiency (lm/W) : 160	
Color rendering index (Ra) : 80	

### Body

Body material : Al-6063-T5	Glass materjal : F4 clear glass
Optics material : PC	

### Weight and dimensions

Weight (kg) : 5.7  
 External measure (mm) : L360 x W240 x H122